

Dashed lines ----- are original platted lot lines.

Lot numbers within the block. 1-20 of Block H.

Alleyway

Lot dimensions—this lot is 40' by 100'.

Parent (major) parcel number—this number corresponds to the entire plat.

Individual (minor) parcel number – this is specific to the property. It is combined with the parent parcel number to read: 2114700445

SW AUSTIN ST is the street name.

VO indicates a vacation order. This was likely an old alleyway that the city vacated, meaning the properties on each side gained some land.

The specific block designation within the plat. This could be numbers or letters.

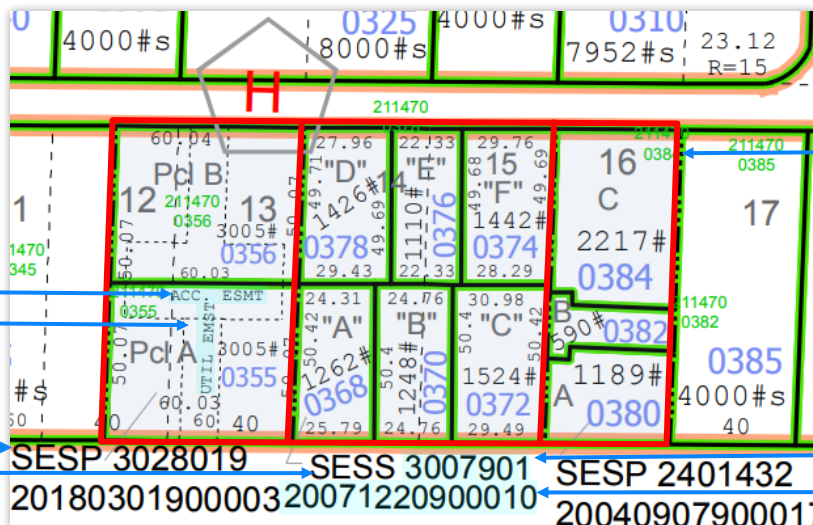
Lot size (25094#) measured in sq. ft. according to assessor's office.

Street right of way—30 30 indicates the width of the street is 60'.

Dumar's is the Plat Name (full name of this plat is Dumar's Highland Park.)

Solid green lines are current tax lot lines.

(enlarged view of short plats below)



Sometimes easements are shown on plat maps. Here an access easement and utility easement are shown.

SESP = Seattle Short Plat

SESS = Seattle Short Subdivision

This section has three different short plats (outlined in red on just this flyer for clarity)

This is the short plat/subdivision number.

The number below is the recording number with the county. Title looks at the recording number when reviewing properties.

Keep in mind: The information provided on King County plat maps is primarily used by the Assessor's Office to calculate taxes. It has been compiled by King County staff from a variety of sources and is subject to change without notice. The maps should not be used as a survey product (establishing boundary lines or lot size).